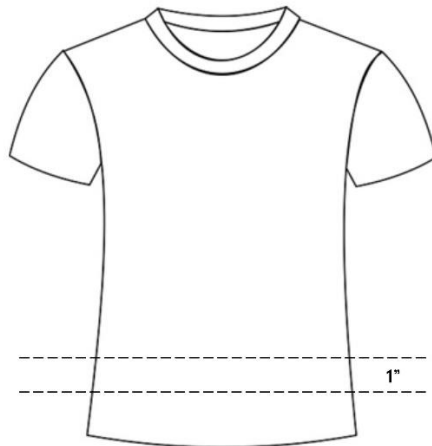
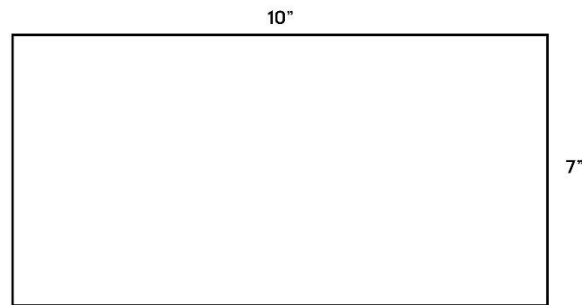


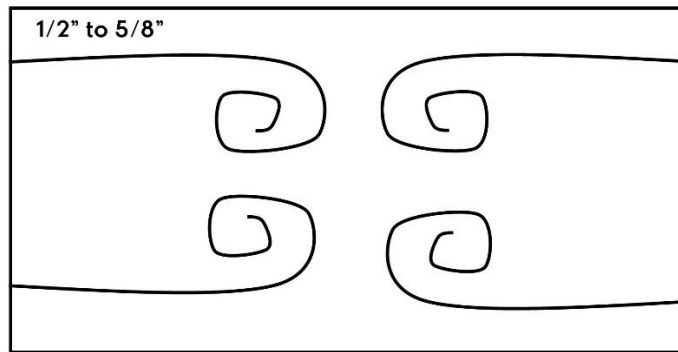
YARMOUTH MASK INSTRUCTIONS

Mask Kits are pre-washed and all materials are cut to size and ready to sew.

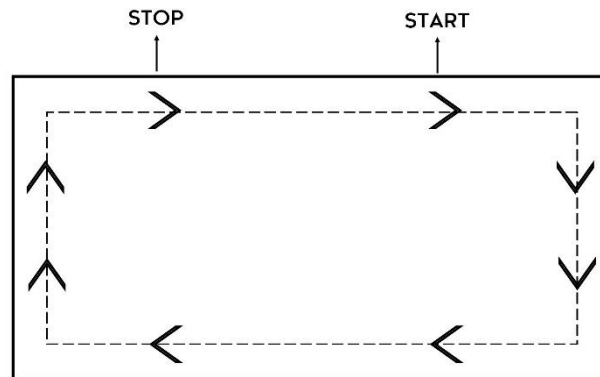
1. Collecting material:
 - a. cut 1 piece of 4 ½", 18 gauge wire.
 - b. fold in the ends so that it is not sharp.
2. Pre-wash your fabric, twice on hot and dry. This is to shrink the material to make the weave as tight as possible. *Preferred materials are cotton used for quilts, flannel or old clean sheets (each mask will need 2 colors/prints in order to designate which side is to be worn facing out).*
3. Cut 2 pieces of fabric (1 of each color/print) 10" wide x 7" high.
4. Cut 2 pieces of non-woven interfacing, if you are using this as a liner/washable filter.
5. Cut 1" strips of cotton t-shirt material from the bottom, working up to the neck. Cut the circle or tube in half. Yank hard on each piece. It will roll on itself. Cut 4, 18" strips of material. It washes well and will not unravel.



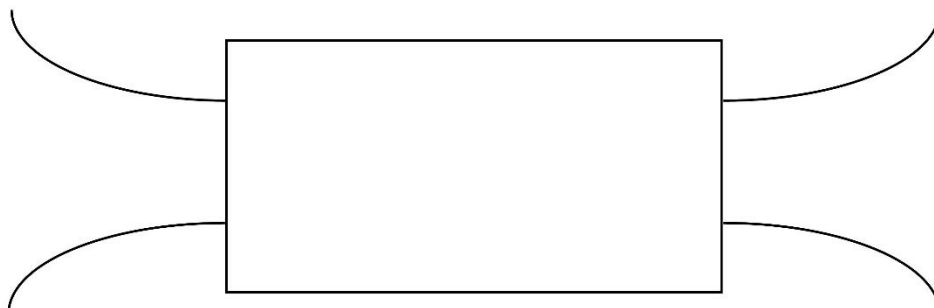
6. Place one piece of fabric face up. Lay one tie in each corner ½" to 5/8" from the edge. This will clear the ¼" seam allowance so that you will avoid catching the tie in the seam. Pin in place.
7. Pile the ties in the middle to avoid sewing them into the seam allowance.



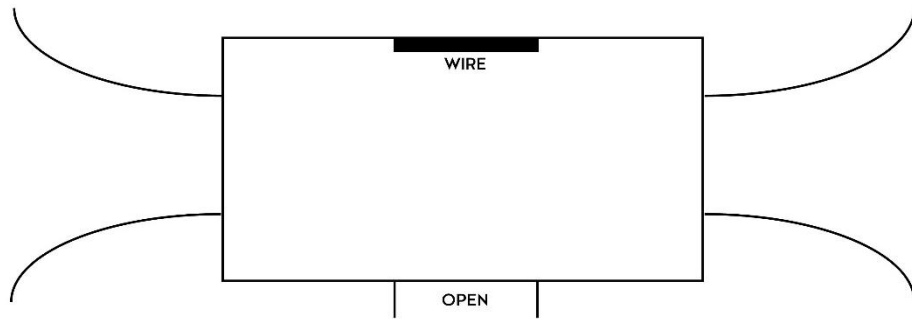
8. Place the other piece of cotton face down on the first piece of cotton. Place the 2 pieces of non-woven interfacing on top of both fabrics. Pin in place.
9. Visually divide, or measure the top long piece into thirds. $3\frac{1}{2}$ ", 3 ", $3\frac{1}{2}$ " (approximate is fine).
10. Using a $\frac{1}{4}$ " seam allowance:
 - a. start sewing on the top right third sewing across the top to the corner > turn > sew down the short side to the corner > turn > sew all the way across the long side > turn > sew up the short side > turn and sew back on the original long side leaving the middle third open (be sure to backstitch as needed and clip the corners if you'd like).



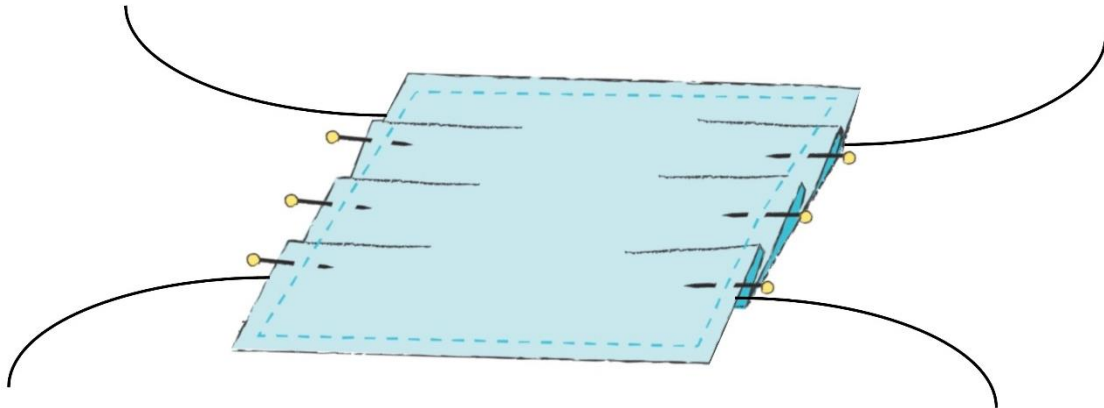
11. Turn the piece inside out. Pull on the ties to help turn it inside out. Use your finger or a pencil with no point to square up the corners. Finger press the seams.



12. Insert the wire in the center of the long, closed side. Pin in place.



13. Start on one side and make three even pleats (*measure or guesstimate*). Pull the pleat to the other side, so that you have pleats on both sides. Pin pleats in place. Do the same thing a total of three times so that you have three pleats going across the long distance of the mask. All of the pleats must face the same direction.



14. Top stitch the mask as close to the edge as possible. Go all the way around the mask, making sure to close the opening that you used to turn the fabric. Be careful to keep the aluminum wire away from your needle. You will be sewing down the pleats at this time. Stitch around the mask a second time. This time sew around the metal wire twice and keep sewing around the mask (*you may iron down the pleats, if desired*).

The mask is complete!

We can provide you with the metal insert or fabric ties, if you have your own fabric or we can provide a FREE pre-cut kit. See contact below.

If any of the instructions were confusing or you have any questions, please call me at **(713) 385 – 4708** or email me at **maryecalvin@gmail.com**